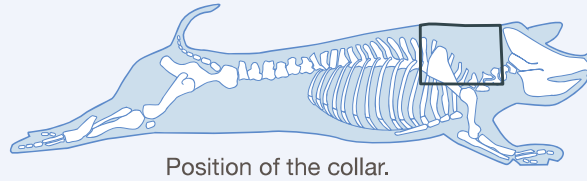


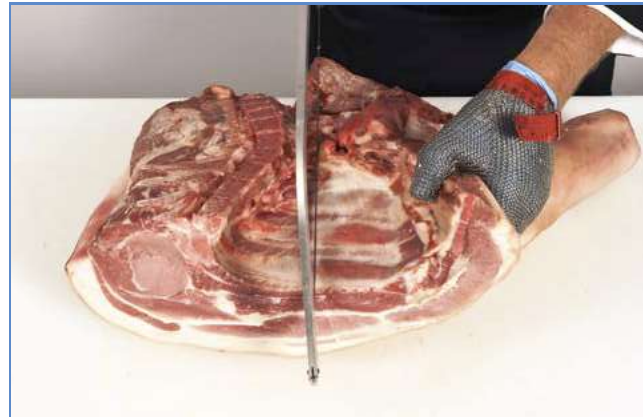
Collar of pork – bone-in



Code: 1007



1 Fore end of pork including foot.



2 Make a mark on the first rib 10 mm from the edge of the neck bone and cut and saw through the rib bones parallel with the backline.



3 Remove the collar by following the natural seams ...



4 ... trying not to cut into the muscle. Continue following the seams leaving ...



5 ... the back fat on the shoulder block until the collar is separated from the shoulder.



6 Collar of Pork – bone-in.



7 Collar of Pork – bone-in.